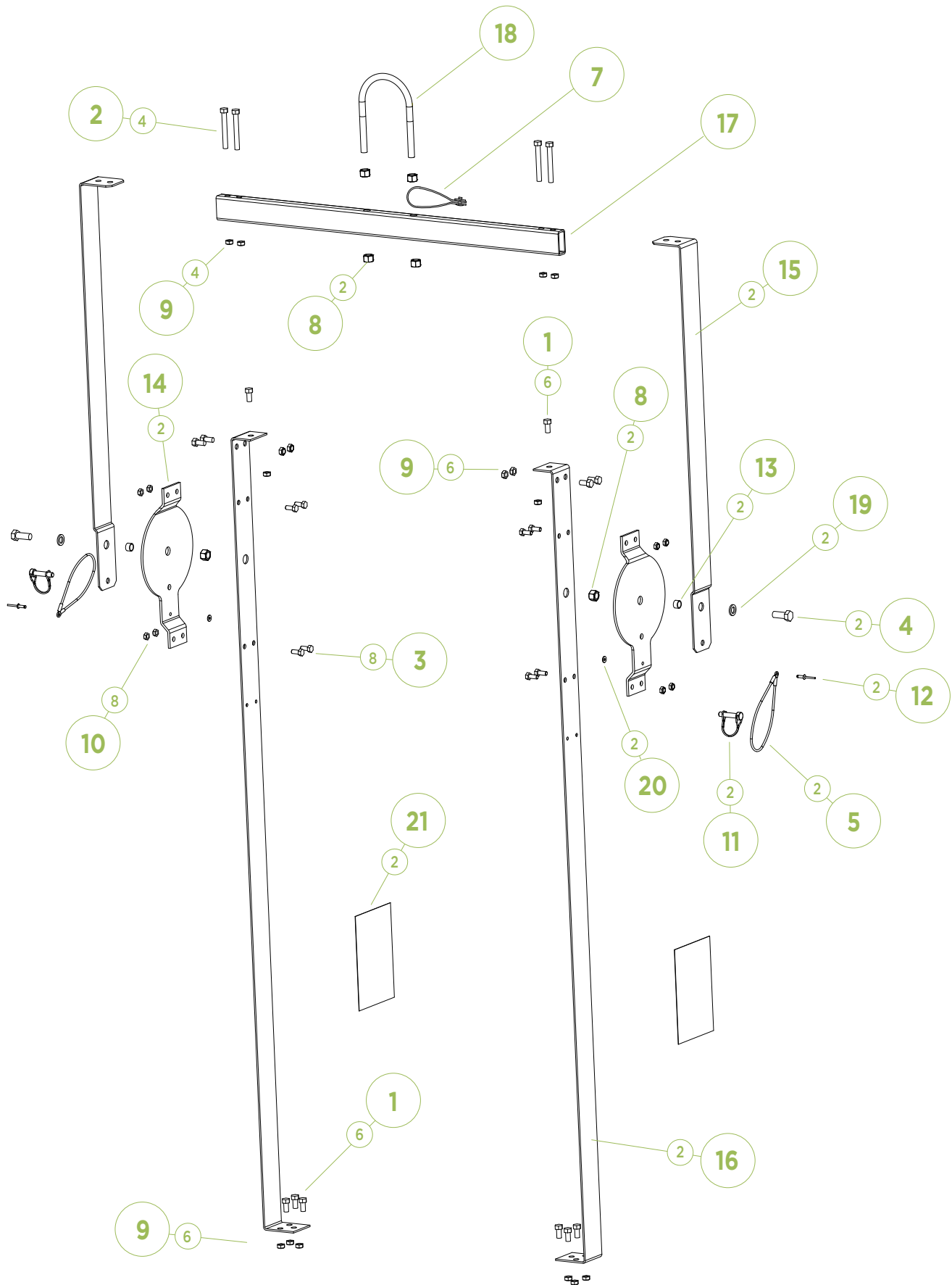


HIGHRISE | LIFT KIT ASSEMBLY



HIGHRISE | LIFT KIT ASSEMBLY PARTS

ITEM #	PART#	QPU	DESCRIPTION	COMMENT	PRICE
	20856	1	KIT- HIGH RISE LIFT		
1	19634	12	BOLT- 3/8-16 X 1 GR8 PLTD		
2	21918	4	BOLT- 3/8-16 X 3 GR5 PLTD		
3	12149	8	BOLT- 5/16-18 X 3/4 HXHD GR5		
4	10088	2	BOLT- 1/2-13 X 1-1/4 GR8 PLTD		
5	23457	2	CABLE- 15" TAG 4		
6	20963	1	INSTRUCTION- HIGH RISE LIFT		
7	21620	1	KIT- NAME PLATE HIGH RISE LIFT		
8	18130	4	NUT- 1/2-13 Nc NYLOC		
9	12333	16	NUT- 3/8 Nc NYLOC		
10	13131	8	NUT- 5/16 NYLOC		
11	23954	2	PIN- 3/8 WIRE LOCK		
12	11027	2	RIVET- #66 ALUM		
13	20918	2	SPACER- HIGH RISE .5 ID X 3/8		
14	20914	2	STANDOFF- HIGH RISE LIFT		
15	20912	2	STRAP- HIGH RISE PIVOT		
16	20913	2	STRAP- HIGH RISE LIFT SIDE		
17	20911	1	TUBE- HIGH RISE CROSS LIFT		
18	20915	1	U- BOLT- HIGH RISE LIFT		
19	16427	2	WASHER- 1/2 FLAT		
20	11315	2	WASHER- 3/16 RIVET STNLS		
21	23951	2	DECAL- WARN HIGHRISE LIFT		